

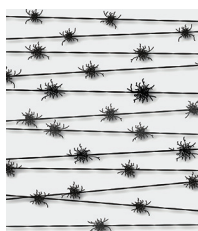


AMERICAN
SOCIETY FOR
MICROBIOLOGY

Journal of
Bacteriology®

CONTENTS • OCTOBER 2018 • VOLUME 200, NO. 20

COVER IMAGE



Cover photograph: The bacterial cell wall functions as a barrier between the organism and its direct environment and serves to maintain cell shape. The cartoon visualizes how the hyphae of the mycelia formed by *Streptomyces coelicolor* are protected from the outside world by connected strands of peptidoglycan. (See related article at e00290-18.) (Copyright © 2018 American Society for Microbiology. All Rights Reserved.)

SPOTLIGHT

Articles of Significant Interest in This Issue

e00492-18

COMMENTARY

The Hydrogen Economy of *Methanosarcina barkeri*: Life in the Fast Lane

e00445-18

Derek R. Lovley

MINIREVIEW

Relationship between the Viable but Nonculturable State and Antibiotic Persister Cells

e00249-18

Mesrop Ayrapetyan, Tiffany Williams, James D. Oliver

RESEARCH ARTICLES

A Novel Bvg-Repressed Promoter Causes vrg-Like Transcription of *fim3* but Does Not Result in the Production of Serotype 3 Fimbriae in Bvg⁻ Mode *Bordetella pertussis*

e00175-18

Qing Chen, Gloria Lee, Candice Craig, Victoria Ng, Paul E. Carlson, Jr., Deborah M. Hinton, Scott Stibitz

Polar Localization Hub Protein PopZ Restrains Adaptor-Dependent ClpXP Proteolysis in *Caulobacter crescentus*

e00221-18

Kamal Kishore Joshi, Christine M. Battle, Peter Chien

EssH Peptidoglycan Hydrolase Enables *Staphylococcus aureus* Type VII Secretion across the Bacterial Cell Wall Envelope

e00268-18

Maksym Bobrovskyy, Stephanie E. Willing, Olaf Schneewind, Dominique Missiakas

High-Resolution Analysis of the Peptidoglycan Composition in *Streptomyces coelicolor*

e00290-18

Lizah T. van der Aart, Gerwin K. Spijksma, Amy Harms, Waldemar Vollmer, Thomas Hankemeier, Gilles P. van Wezel

Role for GrgA in Regulation of σ^{28} -Dependent Transcription in the Obligate Intracellular Bacterial Pathogen *Chlamydia trachomatis*

e00298-18

Malhar Desai, Wurihan Wurihan, Rong Di, Joseph D. Fondell, Bryce E. Nickels, Xiaofeng Bao, Huizhou Fan

Genetic, Biochemical, and Molecular Characterization of *Methanosarcina barkeri* Mutants Lacking Three Distinct Classes of Hydrogenase

e00342-18

Thomas D. Mand, Gargi Kulkarni, William W. Metcalf

Biochemical and Phylogenetic Study of SlfF, a Flagellar Lytic Transglycosylase from *Rhodobacter sphaeroides* e00397-18

Mariela García-Ramos, Javier de la Mora, Teresa Ballado, Laura Camarena, Georges Dreyfus

AUTHOR CORRECTION

Correction for Trokter and Waksman, "Translocation through the Conjugative Type IV Secretion System Requires Unfolding of Its Protein Substrate" e00482-18

Martina Trokter, Gabriel Waksman