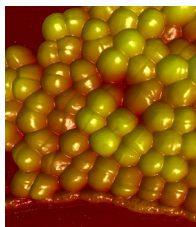


COVER IMAGE



Cover photograph: Atomic force microscopy of *Staphylococcus warneri*, which appears as grape-like clusters. (Photo courtesy of H.-N. Su, Shandong University, Qingdao, China.) (Copyright © 2021 American Society for Microbiology. All Rights Reserved.)

SPOTLIGHT

Articles of Significant Interest in This Issue e00011-21

MINIREVIEW

More than a Feeling: Microscopy Approaches to Understanding Surface-Sensing Mechanisms e00492-20

Katherine J. Graham, Lori L. Burrows

RESEARCH ARTICLE

Measurable Genomic Changes in *Mycobacterium avium* subsp. *hominissuis* after Long-Term Adaptation in *Acanthamoeba lenticulata* and Reduced Persistence in Macrophages e00257-20

Nabeeh A. Hasan, Grant J. Norton, Ravleen Viridi, L. Elaine Epperson, Charmie K. Vang, Brandon Hellbusch, Xiyuan Bai, Edward D. Chan, Michael Strong, Jennifer R. Honda

The Transcription Regulator and c-di-GMP Phosphodiesterase PdeL Represses Motility in *Escherichia coli* e00427-20

Cihan Yilmaz, Athmaja Anandhi Rangarajan, Karin Schnetz

Protein Dosage of the *ltdPRD* Operon Is Correlated with RNase E-Dependent mRNA Processing e00555-20

Lidia E. Angel-Lerma, Enrique Merino, Ohsuk Kwon, Liliana Medina-Aparicio, Ismael Hernández-Lucas, Adrián F. Alvarez, Dimitris Georgellis

Polysaccharide Copolymerase WzzB/WzzE Chimeras Reveal that the Transmembrane 2 Region of WzzB Is Important for Interaction with WzyB e00598-20

Vincenzo Leo, Elizabeth Tran, Renato Morona

The Conserved Translation Factor LepA Is Required for Optimal Synthesis of a Porin Family in *Mycobacterium smegmatis* e00604-20

Skye R. S. Fishbein, Francesca G. Tomasi, Ian D. Wolf, Charles L. Dulberger, Albert Wang, Hasmik Keshishian, Luke Wallace, Steven A. Carr, Thomas R. Ioerger, E. Hesper Rego, Eric J. Rubin

Lipopolysaccharide Transport Involves Long-Range Coupling between Cytoplasmic and Periplasmic Domains of the LptB₂FGC Extractor e00618-20

Emily A. Lundstedt, Brent W. Simpson, Natividad Ruiz

Genome Copy Number Regulates Inclusion Expansion, Septation, and Infectious Developmental Form Conversion in *Chlamydia trachomatis* e00630-20

Julie A. Brothwell, Mary Brockett, Arkaprabha Banerjee, Barry D. Stein, David E. Nelson, George W. Liechti

- Defects in the First Step of Lipoprotein Maturation Underlie the Synthetic Lethality of *Escherichia coli* Lacking the Inner Membrane Proteins YciB and DcrB** e00640-20
Aaron Mychack, Anuradha Janakiraman
- Genetic Analysis of the Role of the Conserved Inner Membrane Protein CvpA in Enterohemorrhagic *Escherichia coli* Resistance to Deoxycholate** e00661-20
Alyson R. Warr, Rachel T. Giorgio, Matthew K. Waldor